



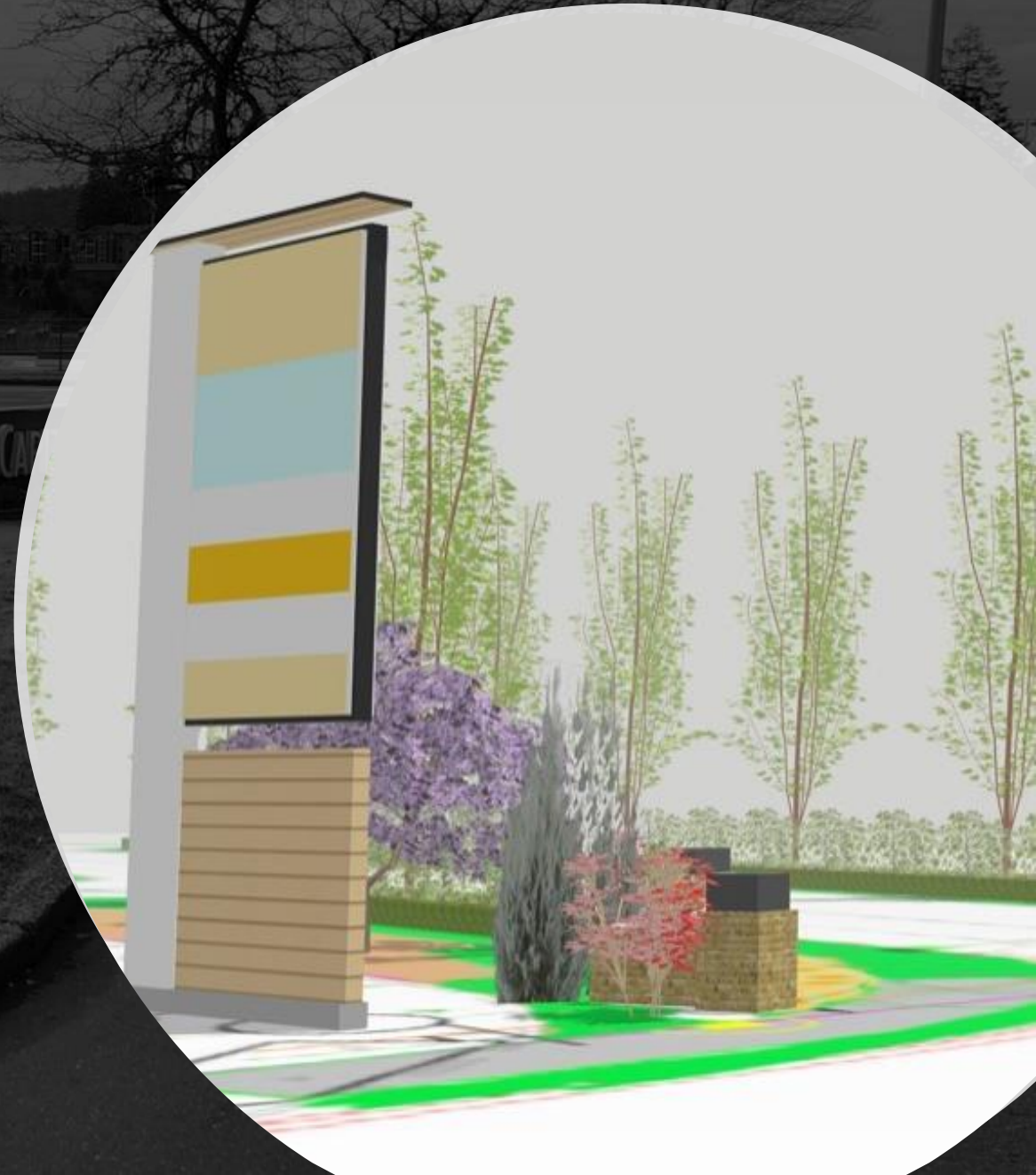
Capital Village

400 Cooper Point Road
Olympia, WA



New Grand Entrance Sign

- Replace “Capital Village” sign
- New Entrance Signage will be 20’ in height
- Dominant Exposure to Cooper Point Road



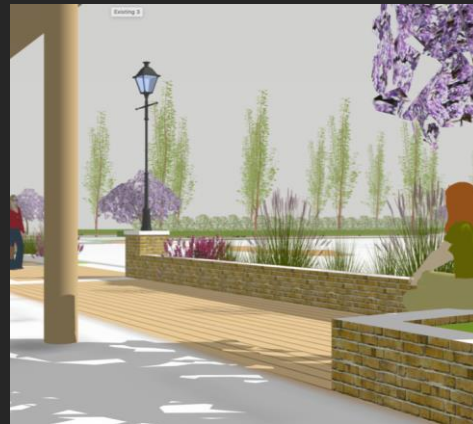


New Grand Drive Aisle

- Amplified Ingres/Egress from Cooper Point Road
- Lush Landscaping
- Enhanced Lighting

Building Apron Upgrades

- Inviting Plaza Area
- Outdoor Seating
- Lighting Features
- Enhanced Landscaping



Storefront Enhancements

- Modernization of Capital Village is underway
- New MOD Pizza expansion with upgraded façade is under construction
- Wig Properties to work with well qualified tenants to modernize the storefront appearance



Old Storefront



New Look for MOD

SOUTH ELEVATION

DOUBLE DOOR PROPOSED FOR SIDE ENTRY



37,000+ Cars/Day at the intersection of Cooper Point Rd & Harrison Ave

Capital Village is a gateway property to the West Olympia CBD and controls the corner of Cooper Point Rd & Harrison Ave. The property has convenient access to Hwy 101, Capital High School, Evergreen State College, Cooper Point Peninsula and is located on the doorstep of Capital Mall. A two signalized intersection property with unobstructed exposure to Cooper Point Road.